

INTERNATIONAL THERAPEUTIC ENDOSCOPIC ULTRASOUND (EUS) COURSE | ITEC-IHU 2021

Making Training in EUS Easier

Course Director
L. SOSA VALENCIA FR/VE

Course Co-Directors
J. HUPPERTZ FR
L. SWANSTRÖM US
F. HABERSETZER FR

BY THE



INSTITUTE OF IMAGE-GUIDED
SURGERY

JUNE 2-4
DEC 8-10

ENDOSCOPY 2021



INTERNATIONAL EXPERTS

JUNE

M. AL - HADDAD US
A. BADAoui BE
P. GRANDVAL FR
V. KAUL US
L.C. SABBAGH CO
P. VILMANN DK

DECEMBER

C. ARDENGH BR
P. DEPRez BE
M. KAHALEH US
F. MARCCACIO AR
C. MICAMES US
J.-W. POLEY NL

ADVANCED INTERNATIONAL THERAPEUTIC ENDOSCOPIC ULTRASOUND (EUS) COURSE | ITEC-IHU

COURSE
JUNE 2-4, 2021
DEC 8-10, 2021

COURSE DIRECTOR
L. SOSA VALENCIA FR/VE

COURSE CO-DIRECTORS
J. HUPPERTZ FR
L. SWANSTRÖM US
F. HABERSETZER FR

INTERNATIONAL EXPERTS

M. AL - HADDAD US
C. ARDENGH BR
A. BADAoui BE
P. DEPRez BE
P. GRANDVAL FR
M. KAHALEH US
V. KAUL US
F. MARCCACIO AR
C. MICAMES US
J.-W. POLEY NL
L.C. SABBAGH CO
P. VILMANN DK

In partnership with:

PENTAX
MEDICAL

With the support of:

STORZ
KARL STORZ - ENDOSKOPE

SIEMENS
Healthineers

COOK
MEDICAL

COUSIN
ENDOSURG

TaeWoong
MEDICAL

G-Flex SIMPLE AND PERFORMING

Boston Scientific
Advancing science for life™

STERIS us endoscopy

erbe

HIGHLIGHT FEATURES

Making EUS Easier

Traditional surgical management has been transformed into a new non-invasive technique known as Therapeutic Endoscopic Ultrasound (EUS). This complex technique which has a steep learning curve needs specific training even in expert hands. Generally, hands-on training courses offered during seminars and conferences are basic and there remains an ever-increasing demand for skills to handle a growing range of EUS procedures.

We are proposing a learning program using live tissue models with simulated pathologies as found in patients. As the therapeutic application of EUS continues to expand, there is a growing need for such an exciting and realistic way of learning!

Endoscopic Ultrasound (EUS) has evolved into a valuable therapeutic modality, therefore to make it more accessible, we can recreate the clinical experience on our experimental imaging platform with the latest EUS equipment, radiological C-Arm, CT-Scanner and Angio-CT. This unique IHU Strasbourg teaching facility provides enhanced imaging of simulated pathological models before EUS intervention.

We are proposing models adapted for multiple interventions:

- Multiple intra-abdominal collections with different contents simulating cystic lesions for EUS-assisted drainage
- Multiple lymph nodes present for biopsies (FNB-FNA), radiofrequency (RF) treatment and fiducial placement
- Biliary dilation for assisted EUS-guided biliary drainages: choledochal, gallbladder, and left intrahepatic biliary tree

We are able to use the latest EUS equipment currently available for patients.

This educational program with mentoring from international experts using pathological live tissue models would allow endosonographers to progress from ERCP and diagnostic EUS to therapeutic EUS.

Join us for this unique learning experience!

14 HOURS
of Hands-On
with simulated
models

COURSE DESCRIPTION

This three-day course is designed for endosonographers and interventional endoscopists. In an era of new minimally invasive treatments, the success of diagnostic EUS in biliopancreatic pathologies and technologic advances has enhanced the interest of endosonographers in performing therapeutic EUS as an effective diagnostic and therapeutic tool in the endoscopic room. This course, which includes theory, live transmission and hands-on, using live simulated models from the experimental platform, is the perfect introduction to the use of therapeutic endosonography in daily endoscopic practice.

COURSE OBJECTIVES

- Perform hands-on therapeutic EUS-guided techniques under expert guidance and learn all definitive current newly validated indications.
- Provide the knowledge required to integrate EUS into clinical practice.
- Identify different materials and systems used for different therapeutic EUS procedures.
- Identify pathological endoscopic ultrasound images like submucosal tumors, lymph nodes, different fluid collections, common bile duct dilatation and intrahepatic bile duct dilatation.
- Understand the real clinical settings of therapeutic endosonography with new linear echoendoscopic equipment, settings like elastography, contrast-enhanced imaging techniques, harmonics and high-resolution Doppler images.
- Address the indications, techniques and results of the most common procedures in therapeutic EUS including radiofrequency ablation.
- Present the fundamental technical requirements of EUS.
- Describe potential pitfalls and complications of EUS.
- Perform experimental therapeutic EUS as vascular embolization with glue injection to introduce endoscopic ultrasound in minimally invasive therapies.

PARTICIPANT PROFILE & REGISTRATION OPTIONS

Group A:

This group is open to a maximum of 32 participants of which 16 are doctors each accompanied with a nurse/assistant at no extra charge. Doctors should have confirmed experience in diagnostic EUS with fine-needle biopsy and interventional endoscopy (>3 years) and/or confirmed experience in ERCP (>3 years) and abdominal ultrasound (>4 years).

Group B:

This group is open to students, doctors and nurses interested in therapeutic EUS.

EDUCATIONAL METHODS

- TEUS hands-on training on simulated live tissue models using echoendoscopy stations with scanner, C-ARM and latest generation MRI-scanner used as therapeutic imaging modalities.
- More than 7 hours of TEUS hands-on training on ex-vivo models and live simulated models (Group A).
- More than 3 hours of live transmissions from the experimental imaging platform.
- Interactive theoretical and video sessions between Faculty and course participants, with conference on hot topics.
- Difficult clinical case discussions with presentations from the participants.

LIST OF PROCEDURES TO BE PERFORMED DURING COURSE (TEAMS OF 2 PHYSICIANS)

- Cystogastrostomy
- CBD gastrostomy (Choledochal drainage)
- Gallbladder drainage
- Hepaticogastrostomy
- Radiofrequency ablation
- Fiducial placement
- Glue embolization
- FNB & FNA
- Neurolysis of celiac ganglia
- Portal pressure measurement and microbiopsy technique

10
PROCEDURES



ADVANCED INTERNATIONAL THERAPEUTIC ENDOSCOPIC ULTRASOUND COURSE

DAY 1

7.45 AM Registration & Welcome

8.15 AM INTRODUCTION

- Presentation: Models and Animal Anatomy
- Presentation: Animal Care
- Equipment: Echoendoscopes and EUS Towers
- EUS Therapeutic Devices

10.30 AM Coffee Break

10.45 AM LECTURES BY EXPERTS - TEUS

- Pancreatic pseudocysts and fluid collection drainage with necrosectomy.
- EUS-guided biliary drainage (EUS-BD), hepaticogastrostomy, gallbladder drainage and choledochoduodenostomy.
- Enteral anastomosis and treatment of surgical complications.
- Radiofrequency ablation, neurolysis, fiducial placement, portal pressure measurement, glue and coil injection.
- Tissue acquisition (EUS-TA) by FNA and FNB. Different types of solid tumors and lymph nodes.
- Pancreatic cystic lesions diagnosis. FNB-FNA, endomicroscopy and microbiopsy.

12.15 PM PRESENTATION OF SHORT CASES

1.00 PM Lunch at the Institute

2.00 PM HANDS-ON SESSION ON EX-VIVO MODELS

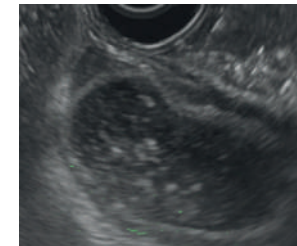
- Cystogastrostomy Drainage Lumen-Apposing Metal Stent (LAMS) Learning

4.30 PM COURSE DEBRIEFING Evaluation of course by participants

5.00 PM End of Day 1



Pancreatic radiofrequency ablation



Cystic drainage-cystogastrostomy



ADVANCED INTERNATIONAL THERAPEUTIC ENDOSCOPIC ULTRASOUND COURSE

DAY 2

8.30 AM	Welcome		2.00 PM	EXPERIMENTAL PLATFORM	CONFERENCE ROOM
8.45 AM	Discussion on Previous Day Activities			Group A2	Group A1
9.15 AM	Group Preparation				Group B
9.30 AM	EXPERIMENTAL PLATFORM	CONFERENCE ROOM		HANDS-ON SESSION	<ul style="list-style-type: none"> • Live Cases* • Case Discussions/ Pre-Recorded Cases
	Group A1	Group A2			
		Group B	5.30 PM	DISCUSSION	
	HANDS-ON SESSION	<ul style="list-style-type: none"> • Live Cases* • Case Discussions/ Pre-Recorded Cases 		Evaluation of course by participants and experts	
1.00 PM	Lunch at the Institute		6.30 PM	End of Day 2	
			7.45 PM	Social Event in Honour of participants	

*Interactive video transmission from the experimental platform to the conference room



ADVANCED INTERNATIONAL THERAPEUTIC ENDOSCOPIC ULTRASOUND COURSE

DAY 3

8.30 AM	Welcome		2.00 PM	EXPERIMENTAL PLATFORM	CONFERENCE ROOM
8.45 AM	Discussion on Previous Day Activities			Group A1	Group A2
9.15 AM	Group Preparation				Group B
9.30 AM	EXPERIMENTAL PLATFORM	CONFERENCE ROOM		HANDS-ON SESSION	<ul style="list-style-type: none"> • Live Cases* • Case Discussions/ Pre-Recorded Cases
	Group A2	Group A1			
	HANDS-ON SESSION	Group B	5.30 PM	DISCUSSION	Evaluation of course by participants and experts
		<ul style="list-style-type: none"> • Live Cases* • Case Discussions/ Pre-Recorded Cases 	6.30 PM	CONCLUSION	
1.00 PM	Lunch at the Institute		6.45 PM	End of Course	

*Interactive video transmission from the experimental platform to the conference room

